

CERTIFICATE OF LOCATION OF GOVERNMENT CORNER

EAST QUARTER Corner of Section 4, Township 106, Range 39, 5TH P.M.

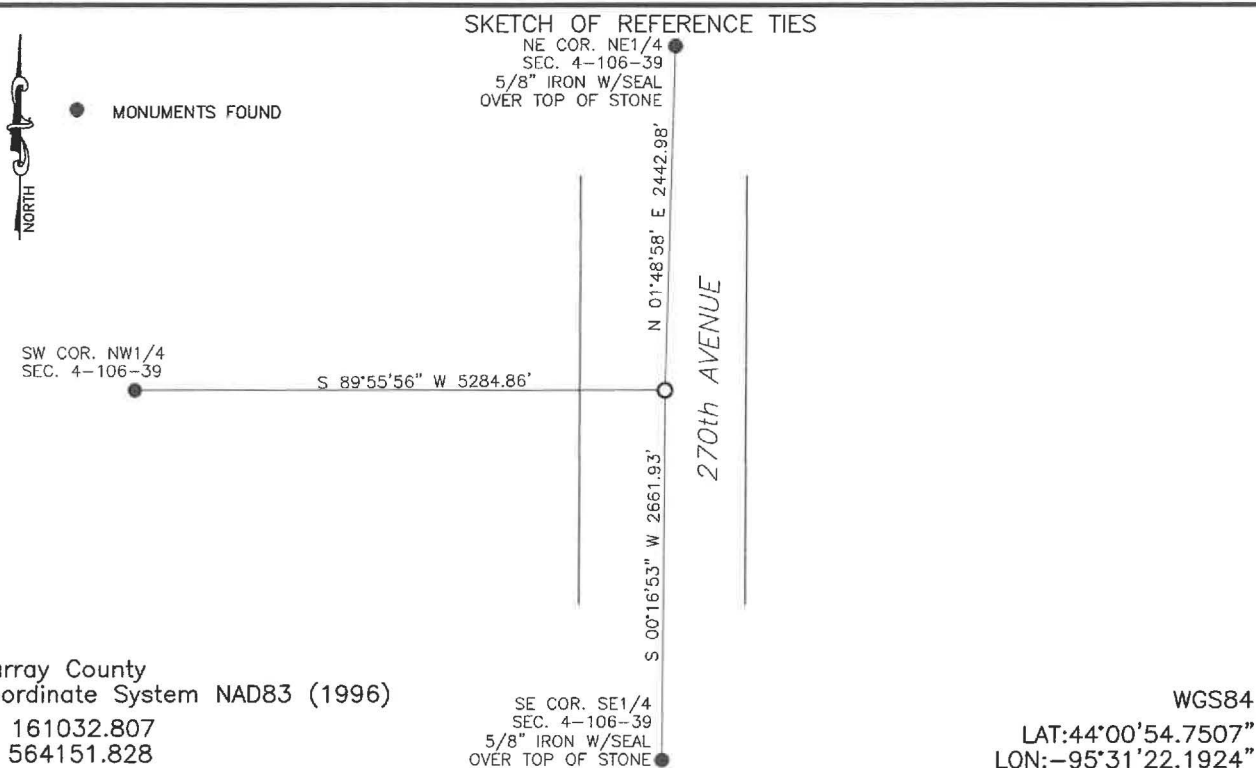
STATE OF MINNESOTA, County of MURRAY

At the corner location shown on the sketch:

☐ On _____ found a _____
DATE

☐ left monument as found, ☐ lowered monument, ☐ removed monument (explain)

☒ On 1/16/2025 placed a 5/8" iron with seal #43844
DATE



Statement of evidence relative to this corner location is on back of page.

I hereby certify that this document and the data contained herein was prepared by me or under my direct supervision.

Daniel L. Buettel
Daniel L. Buettel
License No. 43844

3/12/2025
DATE

MAR 13 2025

Karen Brann

MURRAY COUNTY RECORDER

Statement of Evidence

EAST QUARTER CORNER SECTION 4, T106N, R39W, of the 5th P.M.

In September 1858, W.J. Neely surveyed the east township line.

In July of 1861, J.W. Myers surveyed the north, south, and west township lines.

In August of 1861, Wellman & Smoot subdivided the township.

On July 22, 2024 Bueltel-Moseng Land Surveying dug a 4'x6'x5' deep hole with a backhoe and found nothing. There was nothing recorded at the corner.

On January 16, 2025 Bueltel-Moseng Land Surveying set a $\frac{5}{8}$ " iron with seal #43844 in the center of the road and in line with fence/occupation lines running east and west. Single proportion is 7'± south of well established fence/occupation lines and the line between the section corners is 35'± east of the center line of the existing roadways.